



TIME TO RENOVATE?



When Considering a Renovation...Experience Matters

For over 40 years, Kiefer U.S.A. has experience in renovating old athletic surfacing. Kiefer U.S.A. has completed over 2 million square feet of successful overlays in the following applications:

- Overlaying problem urethane surfaces
- Overlaying OLD poured urethane surfaces
- Overlaying urethane failures
- Overlaying problem sheet vinyl surfaces
- Overlaying OLD sheet rubber surfaces
- Updating old Mondo surfaces

Kiefer U.S.A.'s team of facility specialists have over 200 years of combined experience in assisting clients with solutions in hard to solve renovation projects. This experience insures a problem free and smooth process, from start to finish for your renovation project. We are honored to have a completed project list second to none in the industry.

Take a look at a small sampling of our completed projects to date:

Southern Illinois University • Iowa State University • Bowling Green State University • Earlham College • Illinois State University • University of Minnesota • Illinois Wesleyan University • Black Hills University • Drake University • University of Kentucky • South Dakota School of Mines • Becker High School • Merrillville High School • Ohio University • Albion College • Missouri Valley College • Eastern Illinois University • Indiana University • Cornell College • Rose-Hulman Institute of Technology • Doane University • Nebraska Wesleyan University • Central College • Ohio Northern University • Monmouth College

Mondo Over Urethane

BEFORE



Illinois Wesleyan University - Shirk Center (IL)

- Existing surface 10 year old poured urethane.
- Existing surface was a factor in increased incidence of injuries.
- Clear top coat worn out in many areas, causing co-efficient of friction issues.
- Cost to re-coat after ten years was \$250,000.
- University opts for a Mondo prefabricated overlay solution.
- Combination of three different textures to accommodate different sports.
- Enhanced shock absorption and resiliency thus minimizing potential injuries.
- Never requires further coating, therefore providing superior life-cycle benefits over poured urethane.

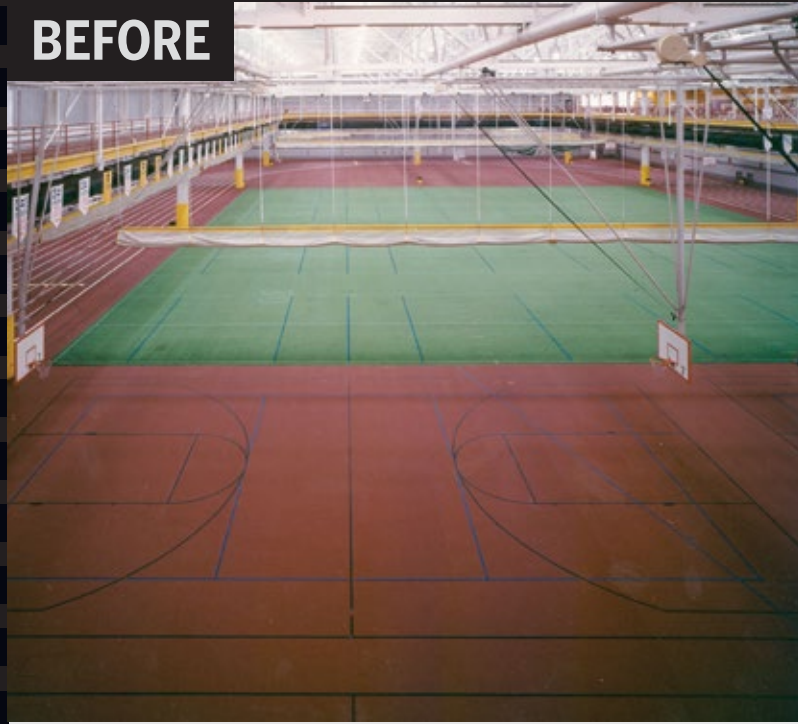
**Installation
Fully
Guaranteed**

✓ **Satisfied Customer**

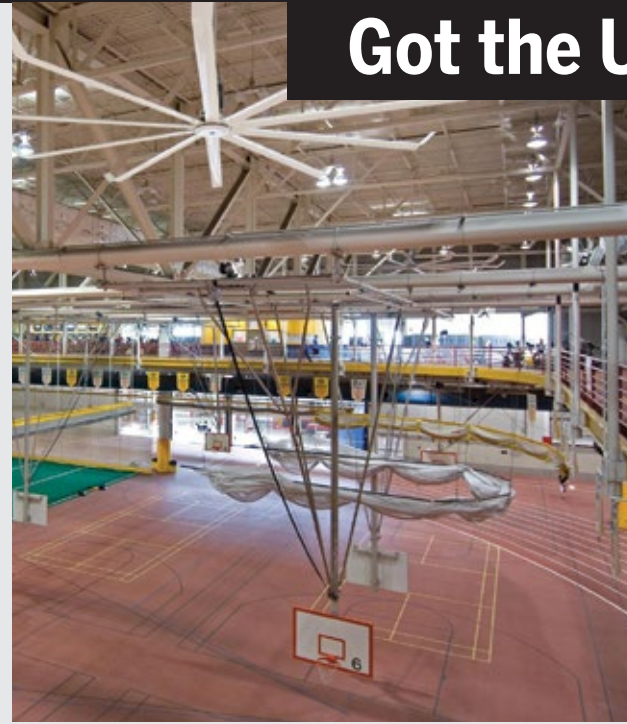


AFTER

BEFORE



Got the Urethane Blues?



BEFORE



Iowa State University - Lied Activity Center (IA)

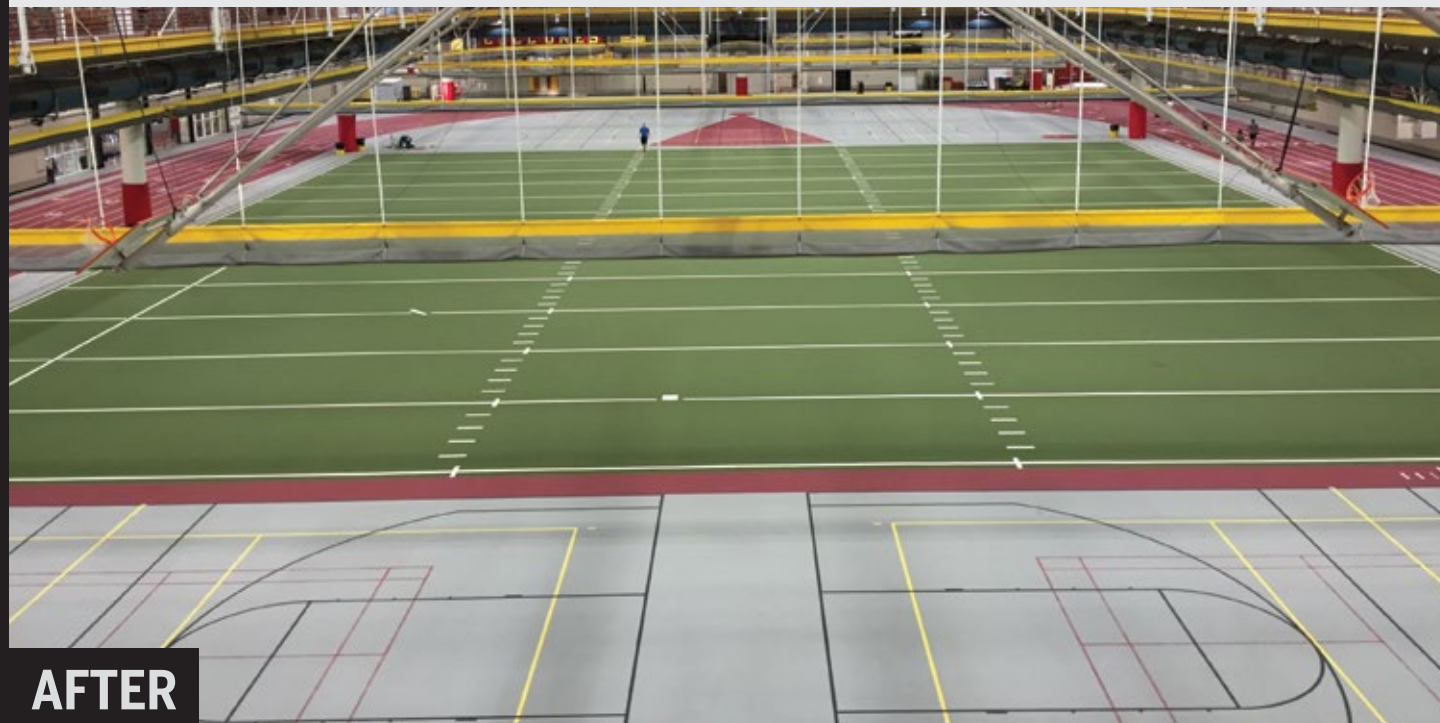
- Lied Activity Center opened in 1990.
- Original surface...poured urethane.
- Early 1997 the surface was worn and contributing to injuries due to lack of resilience.
- After 7 years - urethane proposal \$575,000.
- University decides to invest \$675,000 to overlay with Mondo Super X.
- No coating ever required for life of the surface.

✓ **Satisfied Customer**

Bowling Green State University - Perry Fieldhouse (OH)

- Perry Fieldhouse opens in 1992. Poured urethane used as initial surface.
- 2005 - Fieldhouse surface was recoated at a significant expense.
- 2013 - Urethane surface once again shows the need for recoating. University starts research on other options for resurfacing.
- 2015 - University decides on Kiefer USA for a Mondo overlay solution. University also opts for Kiefer USA's Patented Integrated Striping Technology, eliminating any future potential for coatings...significant life-cycle benefits are realized.

✓ **Satisfied Customer**



AFTER



AFTER

Mondo Over Urethane

BEFORE



University of Central Missouri (MO)

- Facility opens in 1976 with poured urethane as its original surface.
- Floor is recoated in 1985 at a significant expense.
- Floor is recoated again in 2000 at a significant expense.
- University explores alternate options for redoing the floor in 2010 after urethane becomes hard and brittle.
- University opts for Mondo prefabricated overlay solution, ensuring recoating process will never have to be done for the life of floor.

✓ Satisfied Customer



AFTER

Mondo Over Mondo

BEFORE



Central College - H.S. Kuyper Fieldhouse (Pella, Iowa)

- Kuyper Fieldhouse opens in 1987 with Mondo surface on track and Mondo smooth surface for courts.
- College changes court surfaces to a textured material to accommodate tennis.
- College decides in 2009 to install a new Mondo overlay system that emphasizes a world-class track and field and tennis.
- 2009 - Kiefer USA installs Mondotrack for a 200-meter track and tennis courts.

✓ Satisfied Customer

Installation
Fully
Guaranteed



AFTER

Mondo Over Urethane

BEFORE



Carthage College - Tarble Athletic & Recreation Center (WI)

- The 156,000 square foot Tarble Athletic and Recreation Center opened in 2001.
- The original surface was poured urethane.
- Poured urethane begins to exhibit signs of major wear and shock absorption issues in 2008.
- 2009 - Carthage begins to research new surfacing options.
- 2010 - Carthage College decides on new Mondo overlay system from Kiefer USA. Surface will never need to be recoated for the life of the floor, thus offering significant life-cycle savings to Carthage College.

✓ Satisfied Customer



AFTER

Mondo Over Mondo

BEFORE



Albion College - Dow Fieldhouse (MI)

- Dow Fieldhouse opens in 1987.
- Mondo is the surface of choice.
- Kiefer U.S.A. replaces 28 year old Mondo surface with state-of-the-art Mondo technology.
- Mondo surface in 28 years of use never required any coating, thus saving the college hundreds and hundreds of thousands of dollars in life cycle savings!
- Mondo surface good for 28 more years!

✓ Satisfied Customer

Installation
Fully
Guaranteed



AFTER

Mondo Over Mondo

BEFORE



South Dakota School of Mines & Technology (SD)

- 17 year old Mondo track. Minimal life cycle costs over 17 year span.
- Customer desired to update to latest modern technology.
- Customer after extensive research chooses Mondo Super X for overlay renovation.
- Customer choose Mondo again!
- Added contrasting color exchange zones.
- New Super X allowed for increased shock absorption and resiliency.
- Substantial savings versus starting over.
- New modern color scheme

✓ Satisfied Customer



AFTER

25 Years Worry-Free ✓

Mondo Over Mondo

BEFORE

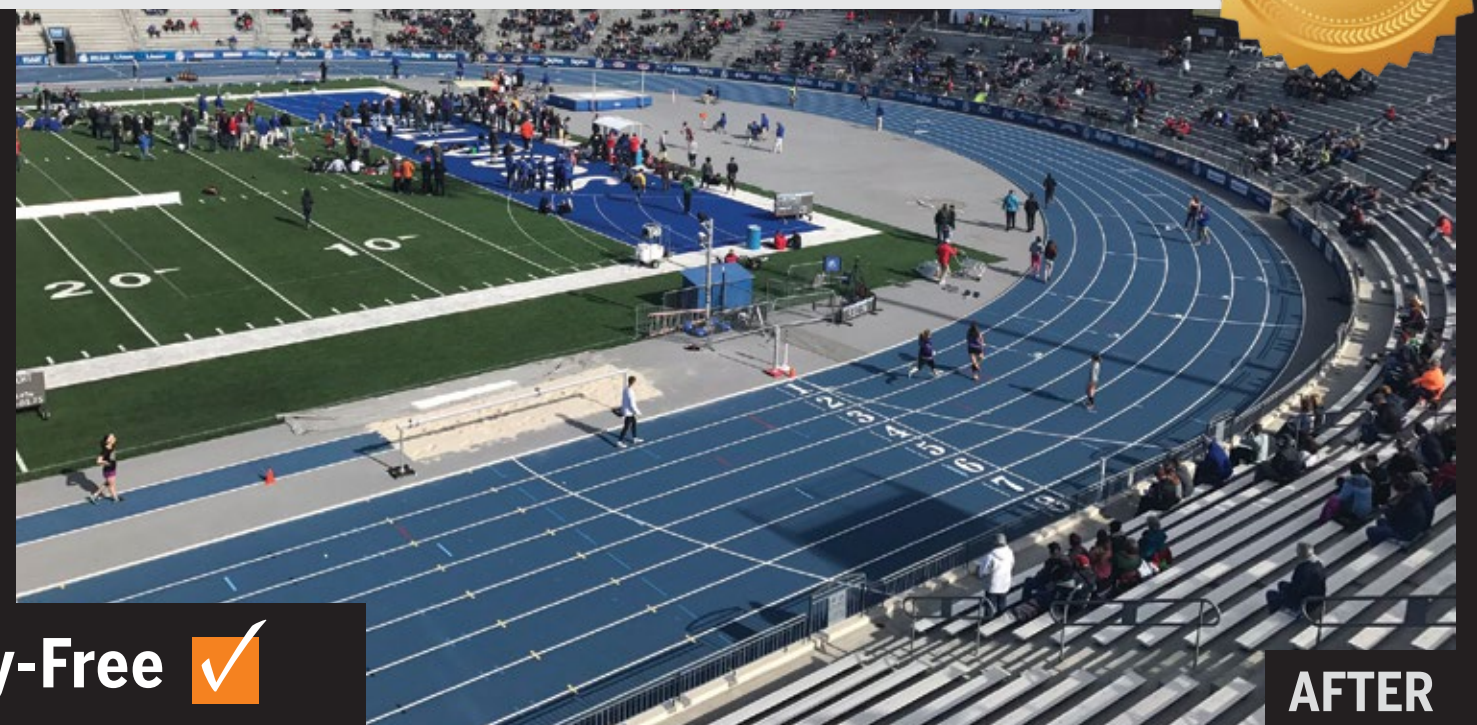


Drake Stadium at Drake University (Des Moines, IA)

- Home to the nationally renowned Drake Relays.
- Home to numerous NCAA national competitions.
- 2005 - Mondo Super X Performance was installed as part of a 15 million dollar stadium renovation.
- As part of a major stadium update, University decides on the new world-class track technology from Kiefer USA and Mondo. Kiefer USA completes overlay installation late summer of 2016.

✓ Satisfied Customer

Installation
Fully
Guaranteed



AFTER

10.

WEIGHT ROOMS

BEFORE



Illinois State University (IL) Weight Room

AFTER



BEFORE



Ohio University (OH) Weight Room

AFTER



BEFORE



University of Tennessee Knoxville (TN) Weight Room

AFTER



GYMNASIUMS

BEFORE



Robert Morris University - Chicago, IL
Mondo Advance

AFTER



BEFORE



Wheeling High School (IL)
Mondo Advance

AFTER



BEFORE



Elk Grove High School (IL)
Mondo Advance, Sportflex M, and Super X

AFTER



25 Years Worry-Free ✓

EVERLAY® PROTECTION | EVERLAY® T

Fiberglass-Reinforced Underlayment

EVERLAY® Protection

SPECIFICATIONS

Texture: Smooth
Thickness: 3/16" (4.7 mm)
Roll Width: 6' 6" (2 m)
Roll Length: 65' 7" (20 m)*
* Average length from production

EVERLAY® T

SPECIFICATIONS

Texture: Smooth
Thickness: 1/16" (1.5 mm)
Roll Width: 6' 6" (2 m)
Roll Length: 82' (25 m)*
* Average length from production

Everlay® Protection is a 4.7 mm stabilizing underlayment for indoor installation with Mondo sports flooring products. It is composed of expanded PVC and reinforced with fiberglass. Its underside has a series of small stems in expanded resin to allow air circulation.

Everlay® T is a 1.5 mm stabilizing underlayment for indoor loose laid installations with Mondo sports flooring. Designed to protect against substrate moisture, its underside has a series of small stems in expanded resin to allow air circulations.

BENEFITS OF EVERLAY® PROTECTION UNDERLAYMENT

- Eliminates abatement cost
- Minimizes construction delays
- Increases sound absorption
- Increases shock absorption
- Does not form a thermal barrier when radiant heating is used
- Allows for temporary installations with easy removal after useful life

BENEFITS OF EVERLAY® PROTECTION UNDERLAYMENT

- Eliminates abatement cost
- Minimizes construction delays
- Everlay® T reduces of moisture vapors
- Everlay® T warrantied for up to 12 lbs. of moisture
- Does not form a thermal barrier when radiant heating is used
- Allows for temporary installations with easy removal after useful life

SIMPLIFIED INSTALLATION

Reduced installation time and delays associated with substrate preparation. The Everlay® can be installed without adhesive onto a suitably prepared surface. It will provide a continuous base with excellent resistance to moisture onto which the new flooring can be installed.

STEP 1



STEP 2



STEP 3



Step 1

Unroll Everlay® onto the subfloor, placing the rolls next to each other and tape the seams.

Step 2

Spread the recommended adhesive onto the surface of Everlay®

Step 3

Glue on the top layer of flooring.

Full Service Hardwood Contractors

- ➔ Yearly Maintenance Contracts
- ➔ Screen and Recoats
- ➔ Full Sand and Finishing
- ➔ Tear Outs and Replacements
- ➔ Free Consulting Services
- ➔ Custom Graphics

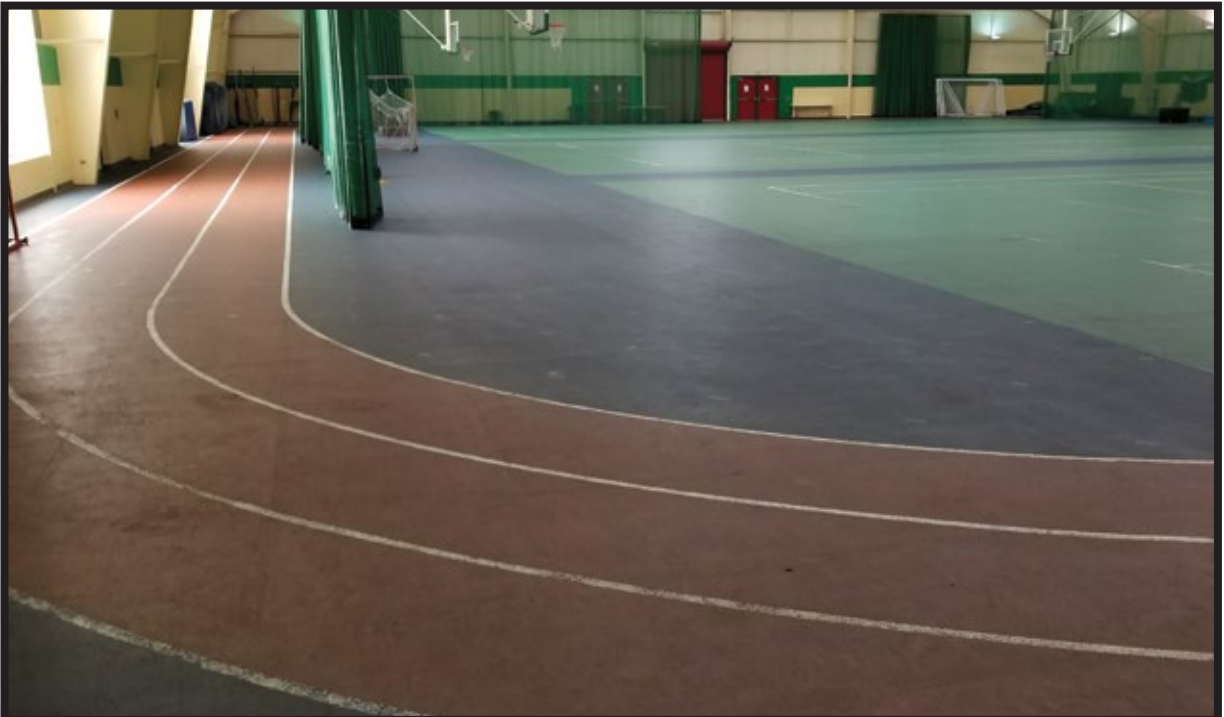


Oakland University (Before Sand & Finish)

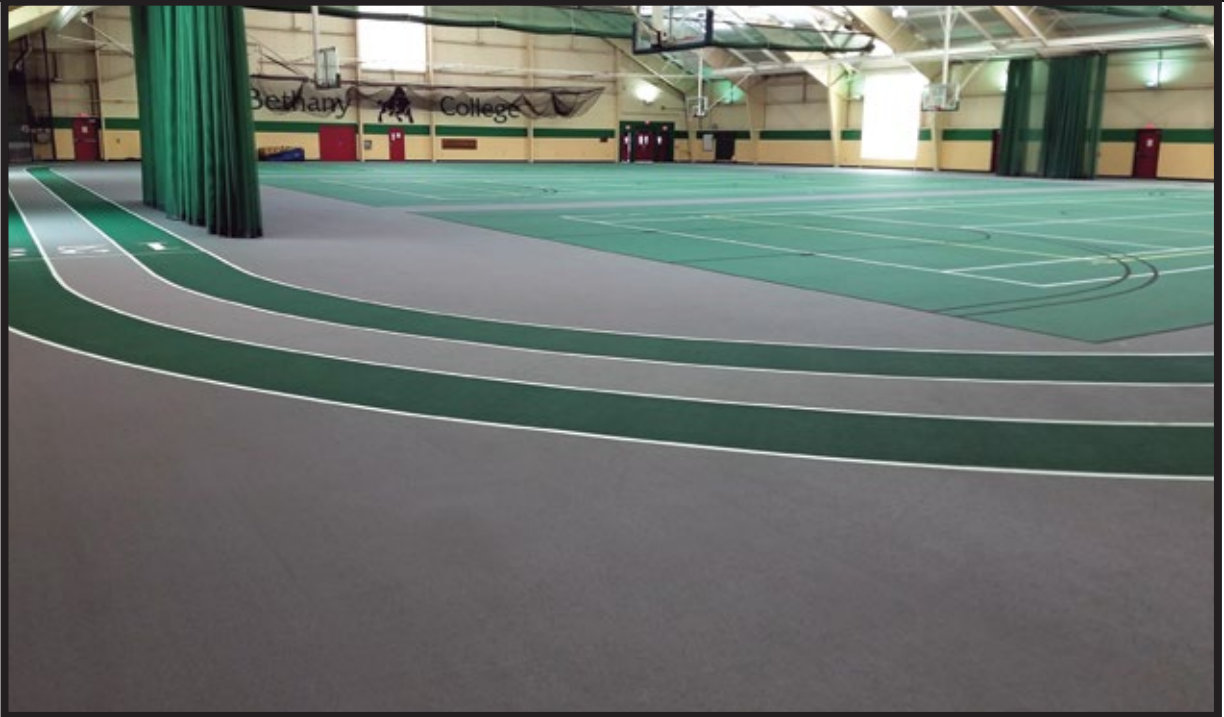


Oakland University (After Sand & Finish)

Bethany College (Before)



Go Beyond the Surface



Bethany College (After)



Corporate Headquarters
2910 Falling Waters Blvd.
Lindenhurst, IL 60046
800.322.5448
kieferusa.com



135 Industrial Way
Rockland, MA 02370
877.474.1187
kiefernortheast.com