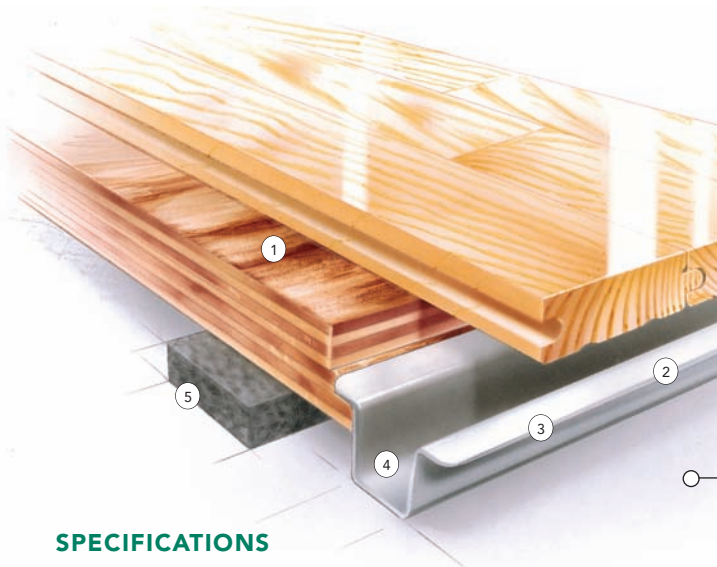


SYSTEM FEATURES AND BENEFITS

A sports floor system providing the stability of an anchored floor with the uniform resiliency of a floating system, consisting in general of a vapor barrier, resilient pads, continuous steel channel, steel anchors, wood subflooring, maple flooring, sanding, sealers, finishes, game lines and wall base.



- ① Pre-assembled subfloor panels
- ② Continuous channel assures uniform substrate contact
- ③ Heavy-duty, buckle resistant steel channel provides greater resistance to pin pull through and upward pressure
- ④ Open channel for visual anchor inspection and additional anchor placement
- ⑤ Rezill Pad for excellent resilient life and loading

SPECIFICATIONS

MANUFACTURING

ISO 9001:2000
CERTIFIED

U.S. PATENT

5,016,413

SYSTEM TYPE

Fixed Resilient

ANCHORAGE

Continuous Channel
(Design Group 1)

SUBFLOOR CONSTRUCTION

Plywood panel

RESILIENCE

Rezill pads

RECYCLED CONTRIBUTION



Rezill Channel subfloor system includes components with recycled content

SLAB DEPRESSION

25/32" (20 mm) flooring – 2 1/8" (54 mm)
33/32" (26 mm) flooring – 2 3/8" (60 mm)

DIN STATUS



D·I·N
Meets or exceeds all requirements of DIN 18032, Part 2

TESTING LABORATORY



United States Sports Surfacing Laboratory

CERTIFIED TESTING



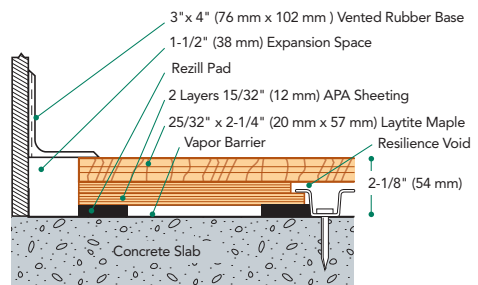
Laboratory test equipment calibrated and certified through the ISSS

GREEN STATUS

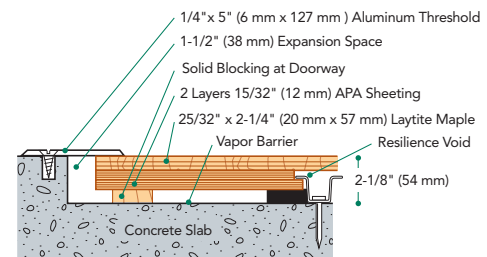


Managed forests, certification available

WALL BASE DETAIL



THRESHOLD DETAIL (optional accessory)



EQUIPMENT DETAIL (optional accessory)

