



KIEFER

U.S.A.

Go Beyond the Surface

ICE ARENA BUYER'S GUIDE





TUFFROLL™

TUFFROLL™

Economical Rubber Flooring

- Virtually odorless
- Durable
- Seamless appearance
- Water resistant
- Stain resistant
- 100% recycled rubber
- Absorbs impact
- Easy to clean/maintain
- Economical
- Non-fading pattern



MADE IN THE USA



Circuit 1 -
Grey, Blue, Red
4 ft. x 50 ft. rolls



Quick Ship
Available



Circuit 1
Black



Circuit 1
Purple



Circuit 1
Blue/Grey



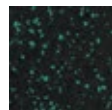
Circuit 1
Brick



Circuit 1&2
Red



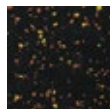
Circuit 1
Red/Grey



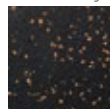
Circuit 1
Green



Circuit 1
Yellow



Circuit 1
Gold



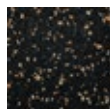
Circuit 1
Brown



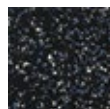
Circuit 1&2
Grey



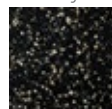
Circuit 1&2
Blue



Circuit 2
Core Crunch



Circuit 3
Steel Impact

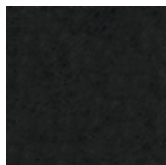


Circuit 3
Cardio Shake

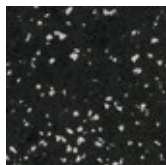
Custom roll lengths may be specified.

**TUFF-LOCK™****Interlocking Rubber Tiles**

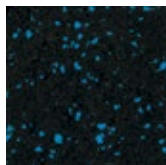
Tuff-Lock™ offers durability, great looks, and easy maintenance with the added advantage of easy-to-install, interlocking tiles. The 24" x 24" puzzle-cut tiles are easy to handle and fit together without the need for messy adhesives. Tight fitting puzzle edges hide seams and reduce dirt buildup. Tiles are easy to cut or trim with a standard utility knife. When compared to the installation costs of glue-down flooring, Tuff-Lock™ is an economical flooring solution.

(Center tiles only)

Black - 08



Grey - 11



Blue - 10



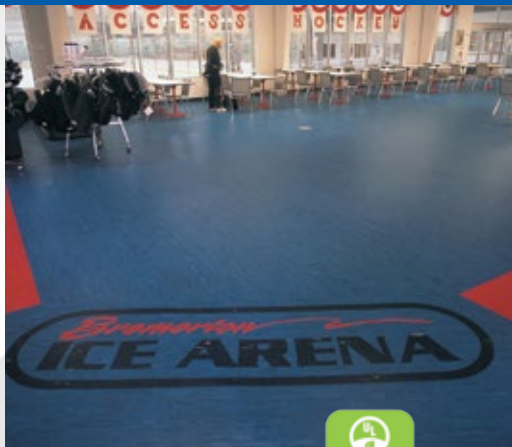
Sand - 62



No Adhesives
Needed

**Call Today
For Quote!**





RAMFLEX

Durable Rubber Flooring

Ramflex has a non-porous, marbleized surface with a hammered texture made with a formulation of natural and synthetic rubber. Won't gouge, scratch, crack, peel, or shrink so it's ideal for ice arena floors, weight rooms, training areas, and locker rooms. Extremely resistant to spills, burns, and stains, Ramflex can easily be glued to a clean, dry sub-floor for total protection against water seepage and bacterial growth.



Solid Black - G790*



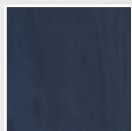
Grey - G707*



Blue - G710



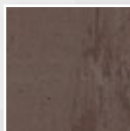
Red - G741



Marine Blue
G986*



Beige - G712



Brown - G715*

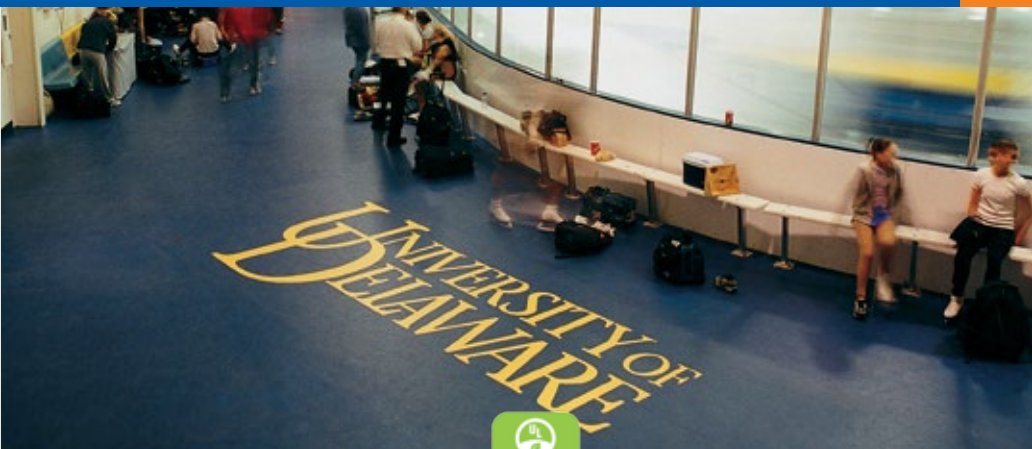


Dark Maple
G920*

Color variations may differ from catalog.

*** Available in an interlocking tile - 24" x 24" (61 cm x 61 cm)**

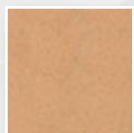
**Call Today
For Quote!**



SPORT IMPACT

Premium Rubber Flooring

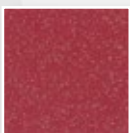
For the most demanding areas, Sport Impact is the premium weight and skate resistant rubber flooring. The homogeneous rubber wear layer is engineered to withstand heavy abuse from skate blades and strength equipment. The non-porous surface requires no coating or finishes and eliminates odors.



Sand - 062



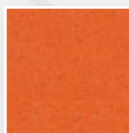
Brown - 136



Red - 141



Purple - 026



Orange - 055



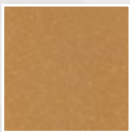
Green - 114



Blue - 110



Dark Blue - 073



Gold - 154



Medium Grey - 011



Dark Grey - 018



Black - 008

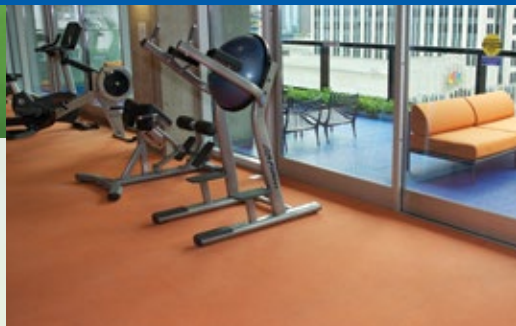
Color variations may differ from catalog.





COLORFLEX

Add Some Color To Your Look -
Possibilities Are Endless...



Create your custom swatch today by visiting our new
Custom Swatch Designer at
www.kieferusa.com/whats-new/custom-swatch-designer

COLORFLEX™

Custom Flooring



MADE IN THE USA

ColorFlex™ is the ultimate, customizable flooring solution for almost any application including health clubs, healthcare facilities, schools, offices, and manufacturing. ColorFlex™ is an assembly of 24 standard EPDM granule colors (and black post-consumer SBR tire rubber) that can be blended at customer-desired percentages into an infinite number of floor colors and designs. ColorFlex™ makes its own EPDM color granules - which consist of nearly 30% post-industrial recycle - and can also custom manufacture EPDM colors and shades to your liking.



Red



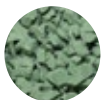
Bright Red



Dark Green



Green



Light Green



Teal



Light Blue



Blue



Dark Blue



Purple



Orange



Yellow



Gold



Dark Brown



Medium
Brown



Cocoa



Beige



Eggshell



Ivory



Virgin Black



Charcoal



Medium Grey



Light Grey



White

MUSCLE MAT™

**Ideal for those areas that
receive heavy use**

**Call Today
For Quote!**

- Black Only
- Non-porous Surface
- Superior Durability
- Excellent Traction
- Repels Moisture
- Minimal Odor
- Easy to Clean and Maintain
- Can Install Over Concrete, Dirt or Asphalt



No Adhesives
Needed

Pebble**Punter****Surface****Surface****Bottom****Bottom****Cross Section****Cross Section**

RECENT INSTALLATIONS

Ridgeland Common Ice Arena - Oak Park, IL - Sport Impact
Ralph Engelstad Arena - Grand Forks, ND - Sport Impact
University of Notre Dame - Notre Dame, IN - Sport Impact
Crown Center Ice Terrace - Kansas City, MO - Sport Impact
Miami University - Oxford, OH - Sport Impact
Penn State University - State College, PA - Sport Impact
The Forum Ice Arena - Fishers, IN - Ramflex
Minnetonka Ice Arena - Minnetonka, MN - Ramflex
Family Arena - Springfield, OH - Ramflex

**Call Today
For Your
Free Sample**

All products online at www.kieferusa.com



**Stay Green—download our
2014 Buyer's Guide today**

For a printed copy please
call 1-877-291-5355 or go
online to "Request a Catalog".



1-877-291-5355

Presorted
Standard Mail
US Postage PAID
PBPS

Kiefer USA
2910 Falling Waters Blvd
Lindenhurst, IL 60046